

EQUIPMENT SCHEDULE	
(XO.3)	BOLLARD SLEEVE SUPPLIER: G.C. MODEL NUMBER: 1736YRS - EAGLE 6" 6-7/8" ID, 7-3/8" OD, 56H, COLOR: SAFETY YELLOW W/ REFLECTIVE RED STRIPE HIGH-DENSITY POLYETHYLENE (HDPE) CONSTRUCTION WITH UV INHIBITORS, SLIDE-ON & TRIM PER MANUFACTURER'S INSTALLATION INSTRUCTIONS.
(XO.9)	LED DECK LIGHT SUPPLIER: CANOPY MANUFACTURER LEGACY LED CANOPY LIGHT, CRUS SC LED LW 30 UE WHT, OVER-HEAD LED LIGHT PREMOUNTED TO CANOPY PER MANUFACTURER'S GUIDELINES. 15-15/16" L X 15-15/16" D X 7-1/8" H, STANDARD SYMMETRIC LIGHT DISTRIBUTION, 300K LIGHT TEMPERATURE, G.C. RESPONSIBLE FOR ELECTRICAL CONNECTIONS.
(XO.16)	MOUNTED FAN SUPPLIER: TOM BARROW COMPANY (CONTACT SCOTT GEORGE PH#404-351-1010 SGEORGE@TOMBARROW.COM) TPI CORP - U18TE-LD 22-1/2" DIAMETER, BLACK FINISH, 10' CORD, TOTALLY ENCLOSED, CORROSION AND DENT PROOF HOUSING, 120V, 1 PHASE, 3 SPEED MOTOR, MOUNT TO WALLS, COLUMNS OR CANOPY CEILING PER MANUFACTURER'S INSTRUCTIONS.
(XO.19)	CLEARANCE TEXT SUPPLIER: CANOPY MANUFACTURER, 9'-0" CLEARANCE TEXT, METALLIC VINYL NUMBERS. TEXT HEIGHTS VARY BY CANOPY - SEE SHOPS FOR COMPONENT AND DIMENSION INFO, CANOPY VENDOR TO INSTALL.
(XO.29)	OVER-HEAD ELECTRIC HEATER SUPPLIER: BROMIC HEATING RE: ELECTRICAL PLANS 55L X 85D X 3.5H, BLACK HIGH TEMPERATURE COATING FINISH, CEILING OR WALL MOUNTED, HORIZONTALLY FACING 30° TO GROUND, SEE CANOPY MANUFACTURER'S SHOP DRAWINGS TOP OF HEATER TO BE MIN 12" TO BOTTOM OF DECK, MUST BE MORE THAN 6" ABOVE GROUND, MUST BE MIN 4" BETWEEN CENTER OF HEATER TO CENTER OF FAN.

NOTE:
1. ALLOW 4'-0" MIN. BETWEEN LIGHTS/FANS AND HEATERS.
2. UTILITIES SHALL BE FED OVER-HEAD ON EXISTING BLDGS.
3. INSTALL FLASHING AT ALL WINDOW CONDITIONS, SEE 4/ASPL1
4. ALL FOOTINGS TO BE BELOW GRADE.
5. DO NOT UNDERMINE EXISTING BUILDING FOUNDATION.
6. DRAINAGE TO BE BELOW GRADE WHEN POSSIBLE PER SITE CONDITIONS, TIE INTO EXISTING UTILITIES.
7. G.C. TO VERIFY METHOD OF DRAINAGE ON CANOPY SHOP DRAWINGS.
8. G.C. TO PATCH AND REPAIR WALL AFFECTED BY DEMOLITION, FINISH TO MATCH EXISTING.
9. X,Y DIMENSION SHOWN FOR ILLUSTRATIVE PURPOSES ONLY FROM FACE OF FINISH TO COLUMN CENTERLINE. G.C. TO CONFIRM DIMENSIONS WITH CIVIL PLANS AND FIELD VERIFY EXACT LOCATIONS. G.C. TO NOTIFY CHICK-FIL-A PROJECT TEAM IF CANOPY LOCATION CHANGES AND IMPACTS OTHER CONSTRUCTIONS RELATED CONDITIONS.

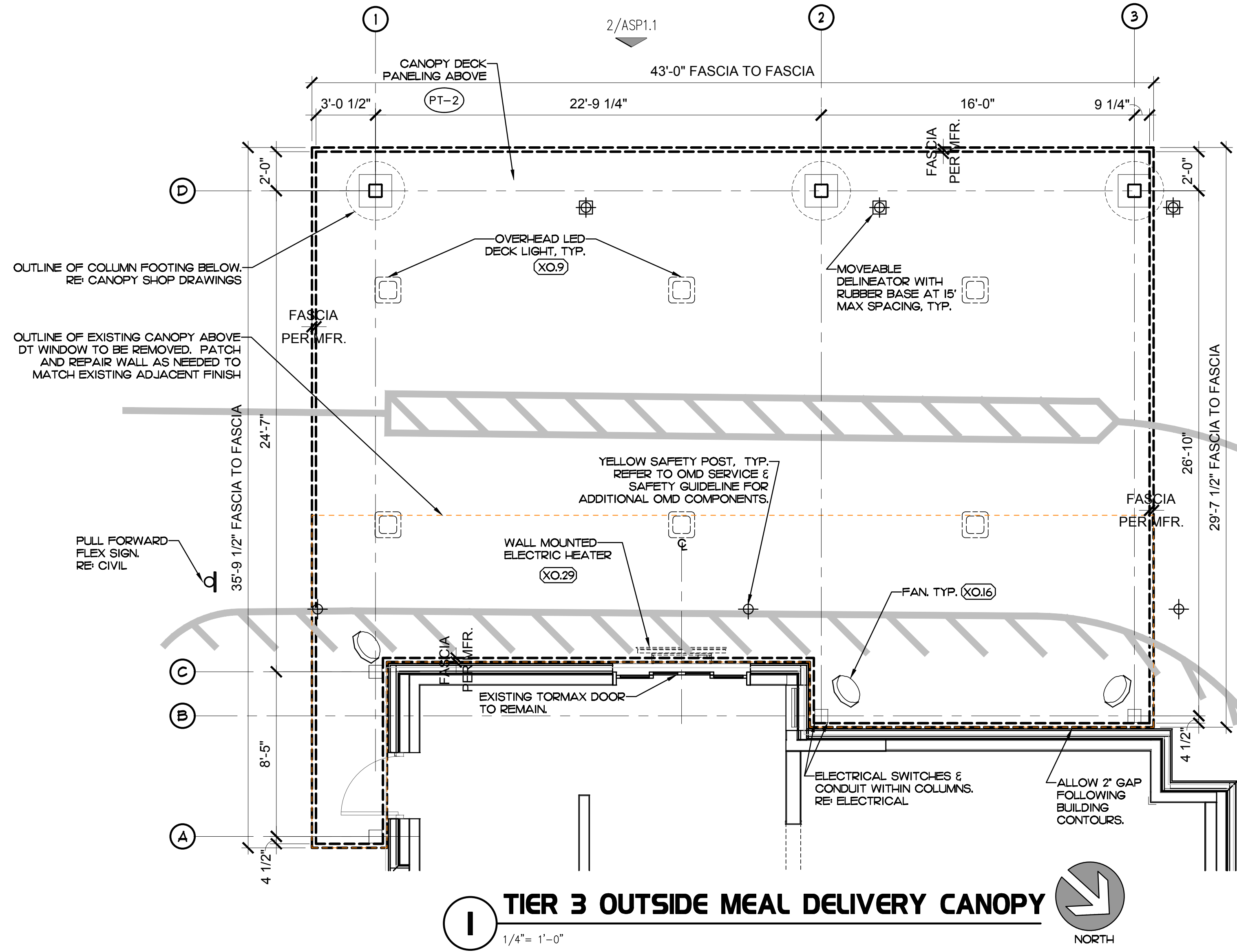
LEGEND
(XXXX) FINISH TAG.
(XXXX) EQUIPMENT TAG.

NOTE:
REFER TO CFA'S OMD SERVICE & SAFETY GUIDELINES AS WELL AS CFA'S OMD G.C. INSTALL GUIDE FOR REFERENCE.

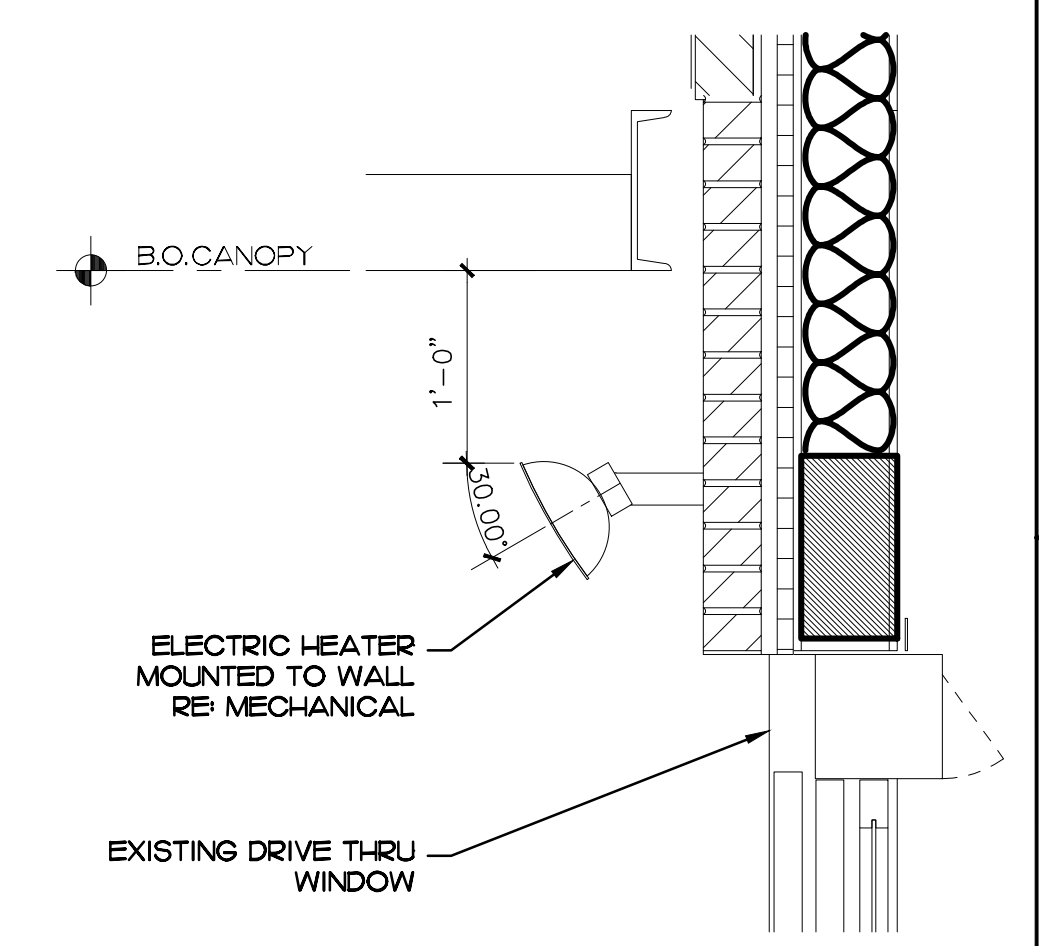
EXPOSED PIPING FINISHES:
ANY EXPOSED GAS OR ELECTRICAL CONDUIT SHALL BE FINISHED, PAINTED BLACK TO MATCH ADJACENT MATERIAL.

EXTERIOR FINISH SCHEDULE
PT-1 DURA COAT, DC19STO2703
DARK BRONZE, OIL RUBBED
BRONZE METALLIC TEXTURE PVD
PT-2 SMOOTH WHITE, HIGH GLOSS

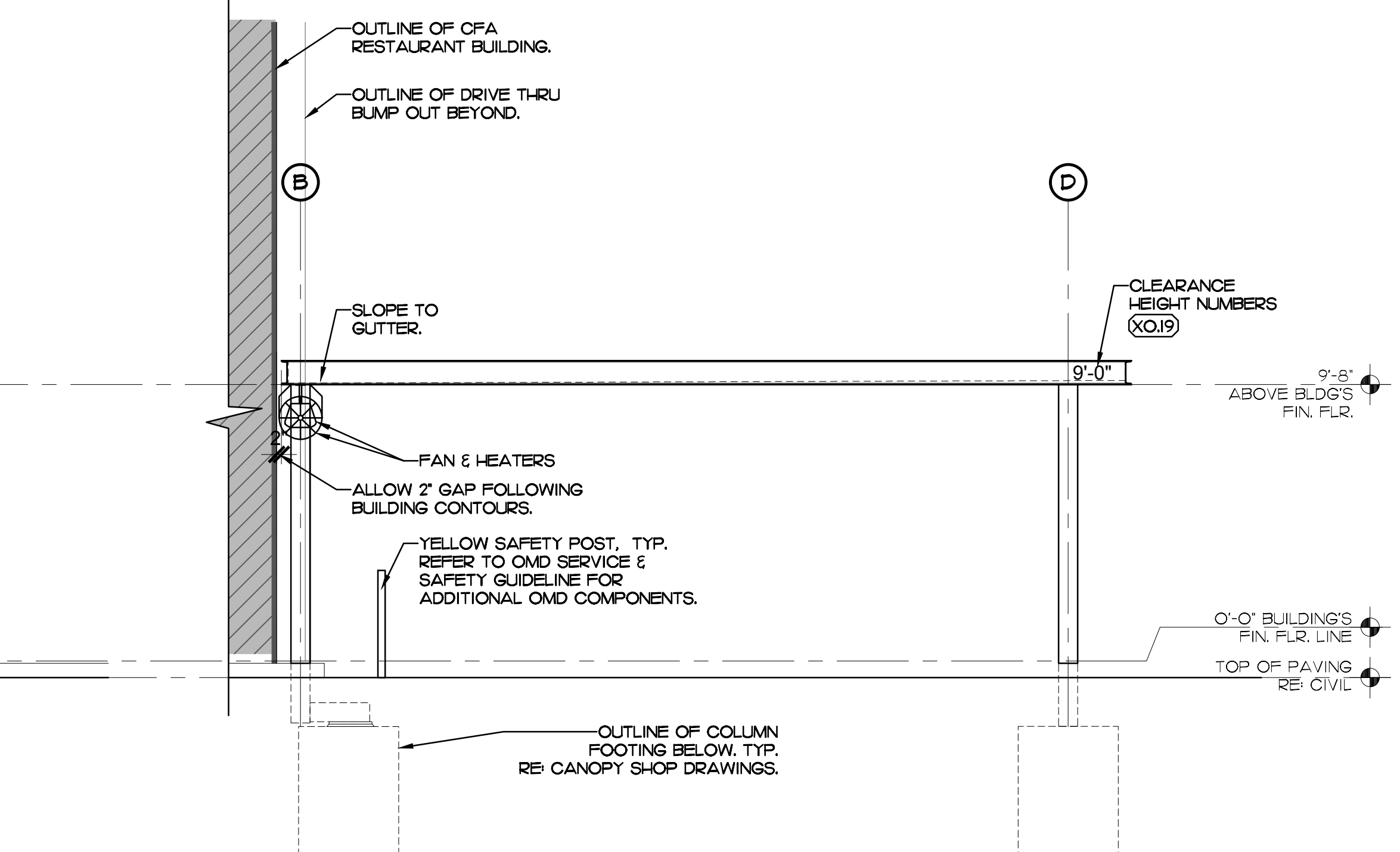
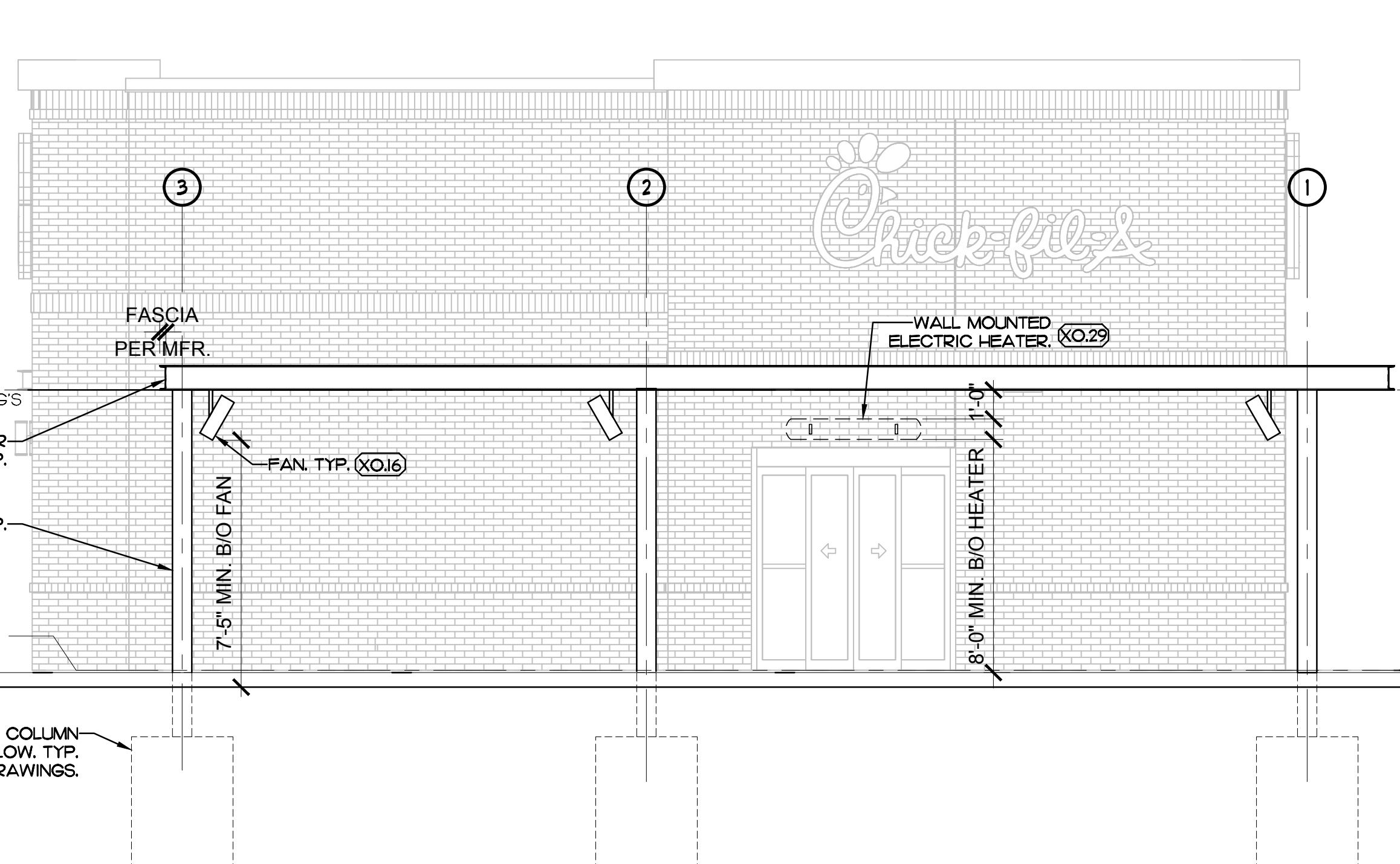
CANOPY EQUIPMENT SPEC NOTES:
REFER TO CANOPY MANUFACTURER CUT-SHEET FOR HEATERS, FANS, CANOPY LIGHTS, PERMANENT BOLLARD & SLEEVE, AND 9'-0" CLEARANCE TEXT SPECIFICATIONS.



4 FLASHING DETAIL
NTS



5 HEATER DETAIL
NTS



Chick-fil-A
Chick-fil-A
5200 Buffington Road
Atlanta, Georgia
30349-2998
LAUREL MARTIN
ARCHITECT

220 E. CENTRAL PKWY, STE 4000
ALTAMONTE SPRINGS, FL 32701
407.645.5008

SEAL:
THIS DOCUMENT IS NOT FOR REGULATORY APPROVAL, PERMITTING, OR CONSTRUCTION.

CHICK-FIL-A
LAWRENCEVILLE
2950 US-1
LAWRENCEVILLE, NJ 08648

FSR#04534
BUILDING TYPE / SIZE: P13 LE
RELEASE: PRINTED FOR PERMIT
REVISION SCHEDULE
NO. DATE DESCRIPTION
CONSULTANT PROJECT # 2023.0463
DATE AUGUST 2023
DRAWN BY SN
CHECKED BY JC
ARCHITECTURAL SITE PLAN - OMD CANOPY
SHEET NUMBER